

APPENDIX 4 – SUPPLEMENTARY ROUTINELY COLLECTED NATIONAL DATA ANALYSIS

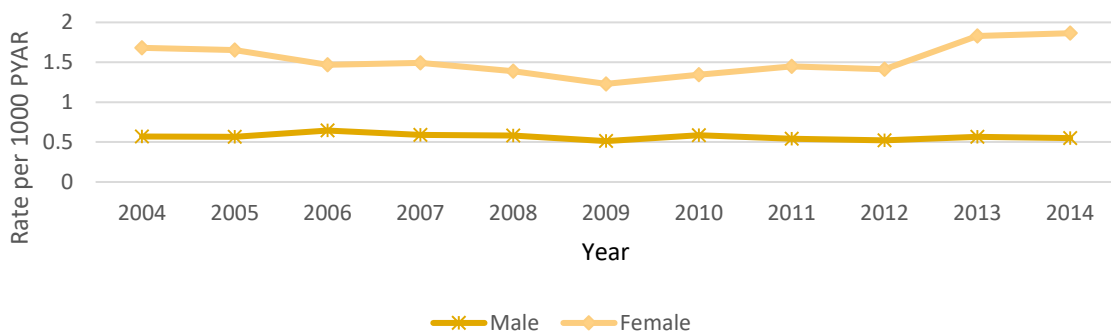
A-Figure A4.1 The rate of individuals per 1000 PYAR with depression, anxiety, eating disorders or self-harm for 11-24 year olds in primary care in individual nations

Source: CPRD four nations



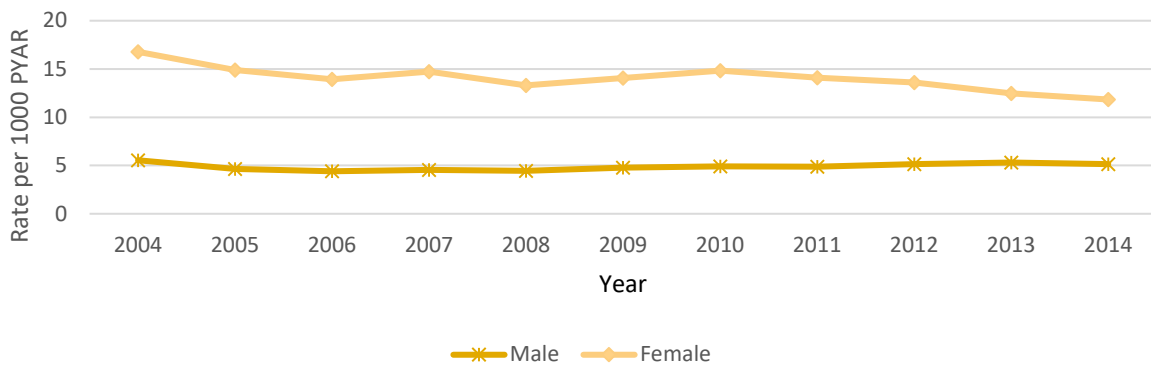
B- Figure A4.2 The annual rate of individuals per 1000 PYAR with self-harm by gender in primary care

Source: CPRD four nations



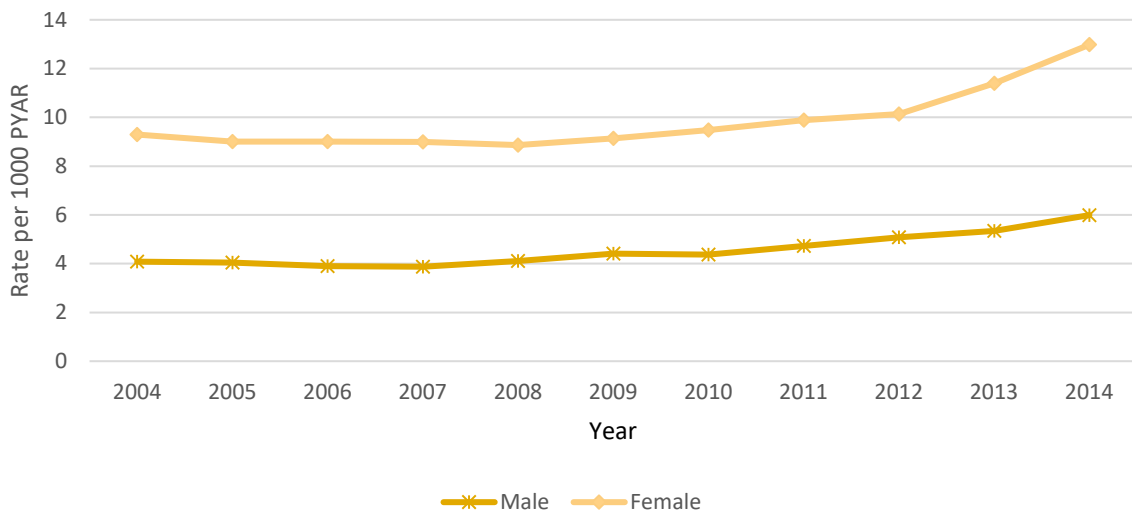
C- Figure A4.3 The annual rate of individuals per 1000 PYAR with depression by gender in primary care

Source: CPRD four nations



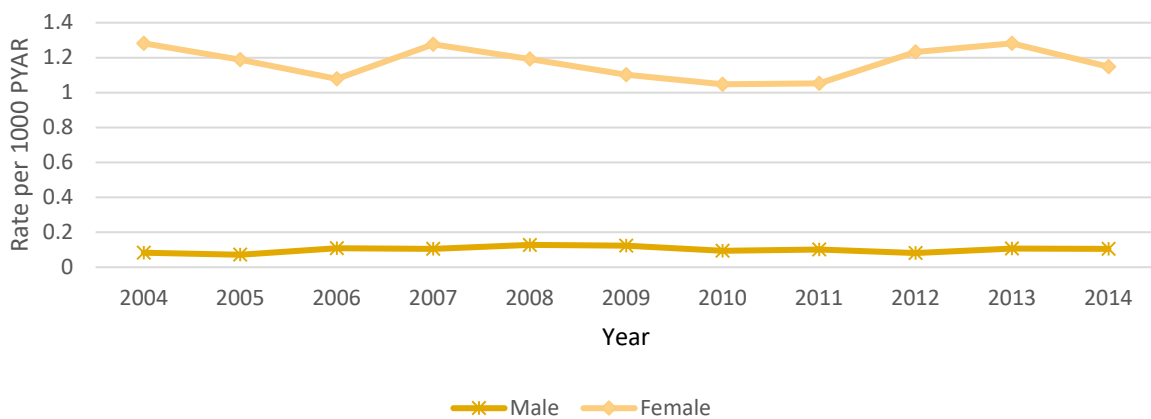
D- Figure A4.4 The annual rate of individuals per 1000 PYAR with anxiety by gender in primary care

Source: CPRD four nations



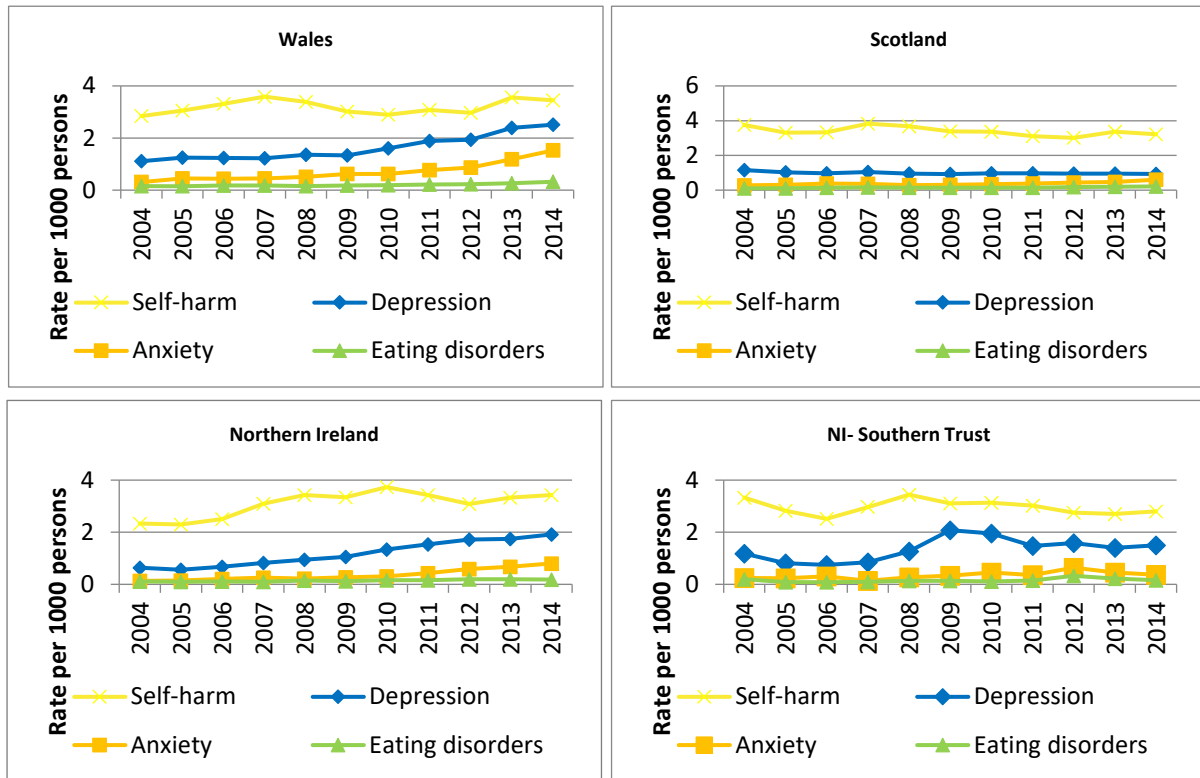
E- Figure A4.5 The annual rate of individuals per 1000 PYAR with eating disorder by gender in primary care

Source: CPRD four nations



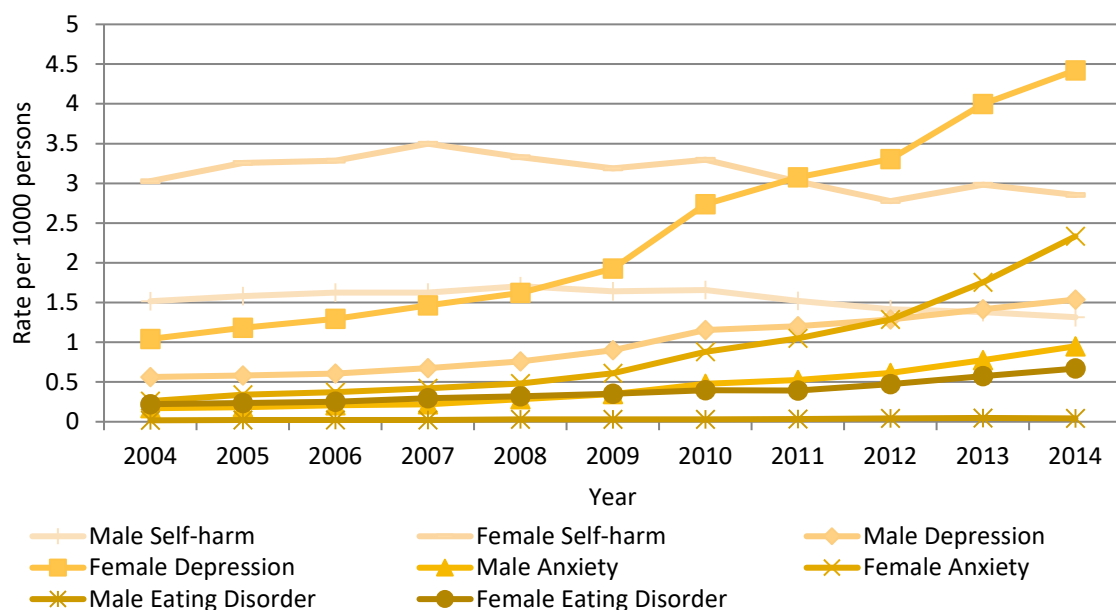
F- Figure A4.6 Rate per 1000 mid-year population of individuals admitted to a general hospital with a diagnosis of depression, anxiety, eating disorders or self-harm for 11-24 year olds across England, Scotland, Wales and Northern Ireland

Source: England-NHS Digital-HES, Wales-SAIL- PEDW, Scotland-ISR-SMR01+SMR04, Northern Ireland-HBS- AD



G- Figure A4.7 Rate by mid-year population of individuals admitted to hospital with a diagnosis of depression, anxiety, eating disorder or self-harm by sex

Source: HES -NHS Digital England



H- Figure A4.8 The count, rate and proportion of GP referrals to secondary care for depression, anxiety, eating disorder and self-harm by nation for 11-2 year olds between 2004 and 2014
Source: CPRD four nations

Condition	England	Wales	Scotland	Northern Ireland	All nations
	Count	Count	Count	Count	Count
	Rate (95% CI)	Rate (95% CI)	Rate (95% CI)	Rate (95% CI)	Rate (95% CI)
	Proportion (95% CI)	Proportion (95% CI)	Proportion (95% CI)	Proportion (95% CI)	Proportion (95% CI)
Self-harm	364 0.1(0.1-0.1) 6.4(5.8-7.1)	83 0.1(0.1-0.2) 11.4(9.4-13.9)	31 0.0(0.2-0.1) 2.7(1.9-3.9)	56 0.2(0.2-0.3) 16.7(13.1-20.9)	534 0.1(0.1-0.1) 6.8(6.3-7.4)
All mental health	7,757 1.4(1.4-1.4) 6.6(6.6-6.6)	1,014 1.6(1.5-1.7) 9.0(9.0-9.0)	492 0.6(0.6-0.7) 3.1(3.1-3.1)	821 3.2(3.0-3.4) 17.7(17.7-17.7)	10,084 1.4(1.4-1.4) 6.8(6.8-6.8)
Depression	2,605 0.5(0.4-0.5) 4.8(4.6-4.9)	282 0.3(0.4-0.5) 5.6(5.0-6.3)	107 0.1(0.1-0.2) 1.3(1.1-1.6)	251 0.9(0.8-1.1) 12.1(10.8-13.5)	3,245 0.4(0.4-0.5) 4.7(4.5-4.8)
Anxiety	2,540 0.5(0.4-0.5) 6.1(5.9-6.3)	290 0.5(0.4-0.5) 7.7(6.9-8.5)	168 0.2(0.2-0.2) 3.5(3.0-4.1)	185 0.7(0.6-0.8) 11.0(9.7-12.6)	3,183 0.4(0.4-0.5) 6.1(6.0-6.4)
Eating disorder	430 0.1(0.1-0.1) 11.4(10.4-12.4)	60 0.1(0.1-0.1) 18.7(14.9-23.3)	22 0.0(0.0-0.0) 5.5(3.7-8.1)	39 0.1(0.1-0.2) 29.5(22.6-37.6)	551 0.1(0.1-0.1) 11.9(11.0-12.8)

I- Figure A4.9 Referral pathway for IAPT^a 2014-2015 for 11-24 year olds table based on number of referrals, except column 2 which is individuals

Source IAPT – NHS Digital

	Referrals received	People referred	Referred and received treatment
	Count Proportion of referrals received %; (95% CI) n=158,125	Count Proportion of people referred %; (95% CI) n=135,535	Count Proportion of referrals received %; (95% CI) n=158,125
Sex			
Male	54,489 34.5(34.2-34.7)	46,667 34.4(34.2-34.7)	28,568 52.4(52.0-52.9)
Female	103,636 65.5(65.3-65.8)	88,868 65.6(65.3-65.8)	58,274 56.2(55.9-56.5)
Age			
Under 18	16,272 10.3(10.1-10.4)	14,679 10.8(10.6-11.0)	9,166 56.3(55.6-57.1)
Over 18	141,853 89.7(89.6-89.9)	121,254 89.2(89.0-89.4)	77,676 54.8(54.5-55.0)
Deprivation^b			
5 (most)	41,491 26.2(26.0-26.5)	35,095 25.4(25.2-25.6)	20,742 50.0(49.5-50.5)
4	32,052 20.3(20.1-20.5)	27,985 20.3(20.1-20.5)	17,490 54.6(54.0-55.1)
3	26,499 16.8(16.6-16.9)	23,205 16.8(16.6-17.0)	14,922 56.3(55.7-56.9)
2	22,431 14.2(14.0-14.4)	19,758 14.3(14.1-14.5)	13,081 58.3(57.7-59.0)
1	21,147 13.4(13.2-13.5)	18,920 13.7(13.5-13.9)	12,822 60.6(60.0-61.3)
<p>^aThis table looks at the REFERRAL table (not the APPOINTMENT table as is used in published figures) to see the proportion of referrals which have a FIRST assessment and/or a FIRST treatment appointment. It counts total referrals received and total people and pathways this relates to, and then counts the total with a FIRST assessment and/or a FIRST treatment appointment.</p> <p>^b 14,505 (9.2%) referrals had a null deprivation record</p>			

J- Figure A4.10 Appointments, DNAs and cancellations for IAPT^a 2014-2015 for 11-24 year olds

Source: IAPT – NHS Digital England

	Appointments	DNA	Patient cancelled	Hospital cancelled
	Count Proportion of appointments (%) n=415023 Average number of appointments per referral	Count Proportion of appointments (%) n=415023	Count Proportion of appointments (%) n=415023	Count Proportion of appointments (%) n=415023
Sex				
Male	132917 32.0(31.9-32.2) 1.7	24811 18.7(18.5-18.9)	10469 3.1(3.1-3.2)	4174 3.1(3.1-3.2)
Female	282106 68.0(67.8-68.1) 1.9	48288 17.1(17.0-17.3)	27186 3.1(3.0-3.2)	8759 3.1(3.0-3.2)
Age				
Under 18	40245 9.7(9.6-9.8) 1.8	6001 14.9(14.6-15.3)	3440 3.2(3.0-3.4)	1284 3.2(3.0-3.4)
Over 18	374778 90.3(90.2-90.4) 1.9	67098 17.9(17.8-18.0)	34215 3.1(3.1-3.2)	11649 3.1(3.1-3.2)
Deprivation^b				
5 (most)	97560 23.5(23.4-23.6) 1.6	20155 20.7(20.4-20.9)	9061 2.9(2.8-3.0)	2857 2.9(2.8-3.0)
4	84154 20.3(20.2-20.4) 1.8	15143 18.0(17.7-18.3)	7890 3.2(3.0-3.3)	2659 3.2(3.0-3.3)
3	72709 17.5(17.4-17.6) 2.0	11859 16.3(16.0-16.6)	6682 3.2(3.1-3.3)	2319 3.2(3.1-3.3)
2	62498 15.1(15.0-15.2) 2.1	9241 14.8(14.5-15.1)	5270 3.2(3.0-3.3)	1976 3.2(3.0-3.3)
1	62538 15.1(15.0-15.2) 2.2	8915 14.3(14.0-14.5)	5277 3.1(3.0-3.2)	1935 3.1(3.0-3.2)
^a Includes only gender '1' or '2' and age 11-24 at referral received date and NHS number status '01' only Excludes around 300 individuals who have >1 valid gender code. ^b 35564(8.57%) appointments had a null deprivation record				

K- Figure A4.11 The count, rate and proportion of individuals with an incident depression, anxiety, eating disorder or self-harm diagnoses with an associated antidepressant, anxiolytic/hypnotic for 11-24 year olds between 2004 and 2014

Source: CPRD four nations

	Antidepressants	Anxiolytics/hypnotics
	Count Rate (95% CI) Proportion (95% CI)	Count Rate (95% CI) Proportion (95% CI)
Self-harm	3189 0.4(0.4-0.4) 42.9(41.8-44.0)	875 0.1(0.1-0.1) 11.7(11.0-12.4)
Depression	46828 6.6(6.5-6.6) 80.8(80.5-81.1)	5961 0.8(0.8-0.8) 9.7(9.5-10.0)
Anxiety	18546 2.6(2.6-2.6) 41.3(40.8-41.7)	3460 0.5(0.5-0.5) 7.3(7.1-7.6)
Eating Disorder	1384 0.2(0.2-0.2) 34.5(33.1-35.9)	209 0.0(0.0-0.0) 4.9(4.3-5.6)

L- Figure A4.12 Primary care linked to education cohort

Source: WLGP & NPD - Wales

HEADCOUNT Reconciliation	ORIGINAL COHORT	EXCLUDED : Too early for education datasets *	COHORT WITH GCSE RECORD	EXCLUDED : Patchy attendance records for reasons tbd (WAG) **	FINAL COHORT BASED UPON CONTINUOUS FIVE YEAR ATTENDANCE RECORD	EOTAS (Education Other Than At Home
All					71,291	
SELF_HARM	12,511	(9,187)	3,324	(2,208)	1,116	29
<u>ALL MENTAL HEALTH</u>	<u>84,719</u>	<u>(67,893)</u>	<u>16,826</u>	<u>(12,524)</u>	<u>4,302</u>	78
DEPRESSION	51,770	(42,074)	9,696	(7,467)	2,229	40
ANXIETY	30,938	(24,427)	6,511	(4,659)	1,852	25
EATING DISORDER	2,011	(1,392)	619	(398)	221	13

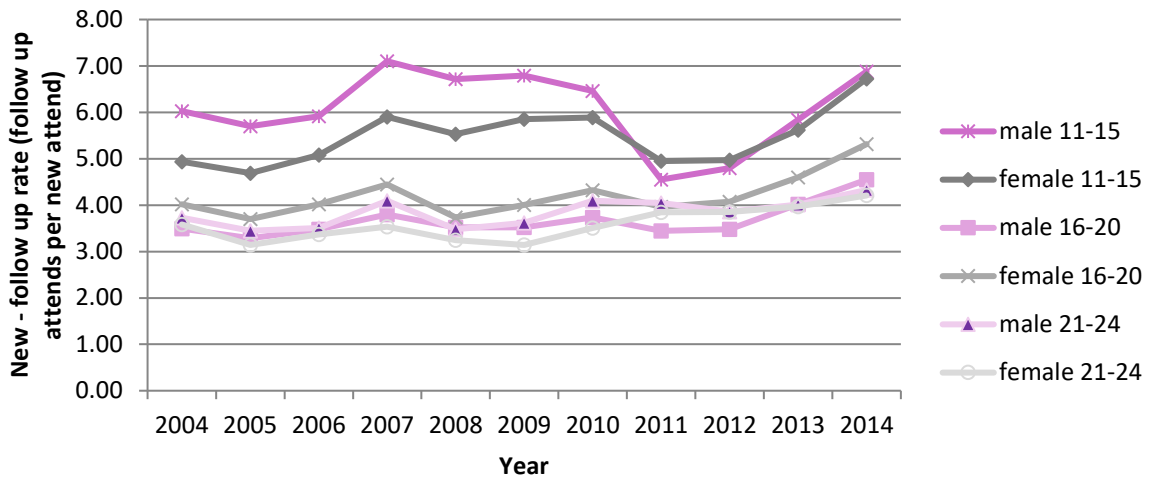
* The education data supplied to SAIL is limited to the years between 2009 and 2016. This means that many members of the original cohort(s) supplied for the project cannot be included based on their birth date. A GCSE attainment record (5 GCSE including English/Welsh language and Mathematics) was the initial selection point.

** Of the remaining number it was noticed that the attendance records appear incomplete. Entire years were missing. To avoid bias it was decided to remove them from the analysis. Excluded are those Educated Other Than at School (EOTAS = no attendance) and those genuinely missing a year of school but not identifiable.

Source: WLGP & NPD- Wales

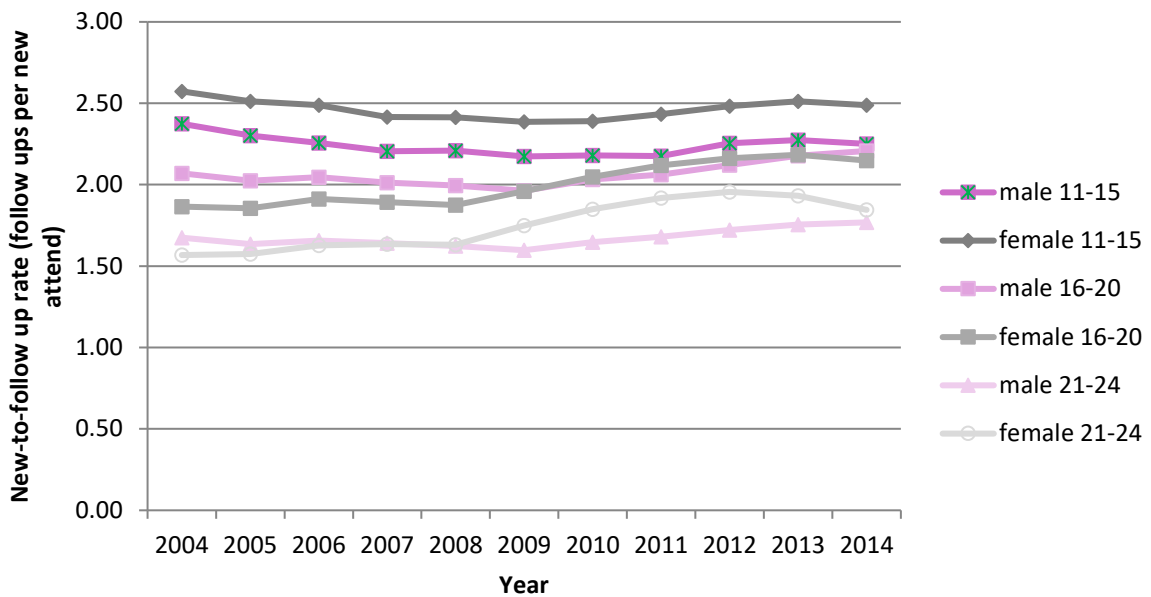
M- Figure A4.13 New to follow-up rates by age and sex (the number of follow-up appointment ATTENDED for each new appointment ATTENDED) for MH specialties

Source: HES- outpatients- NHS Digital England



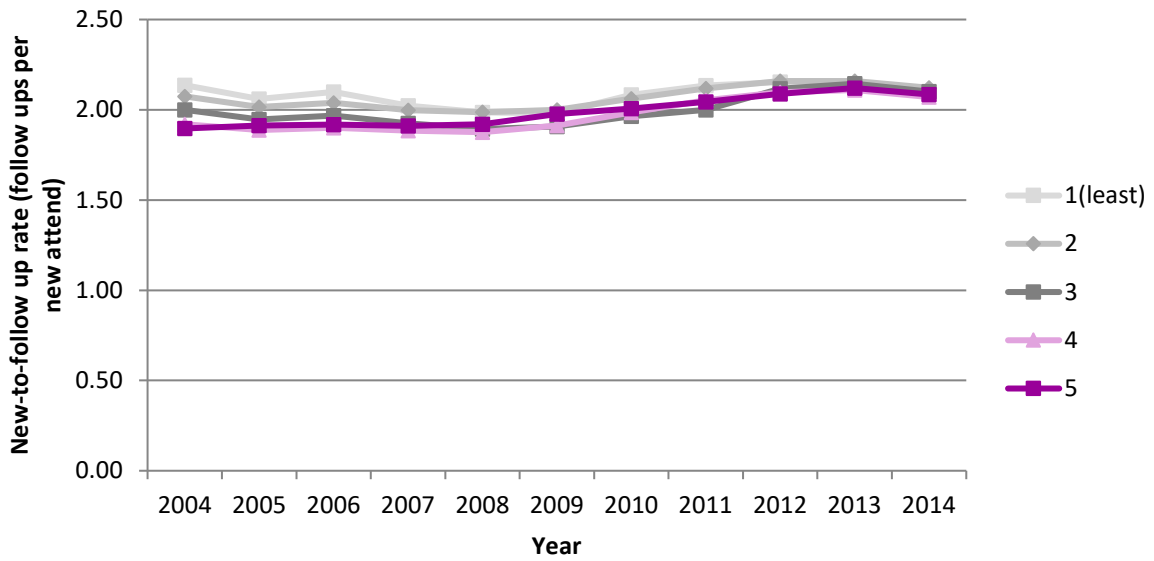
N- Figure A4.14 New to follow-up rates by age and sex (the number of follow-up appointment ATTENDED for each new appointment ATTENDED) for ALL specialties

Source: HES- outpatients- NHS Digital England



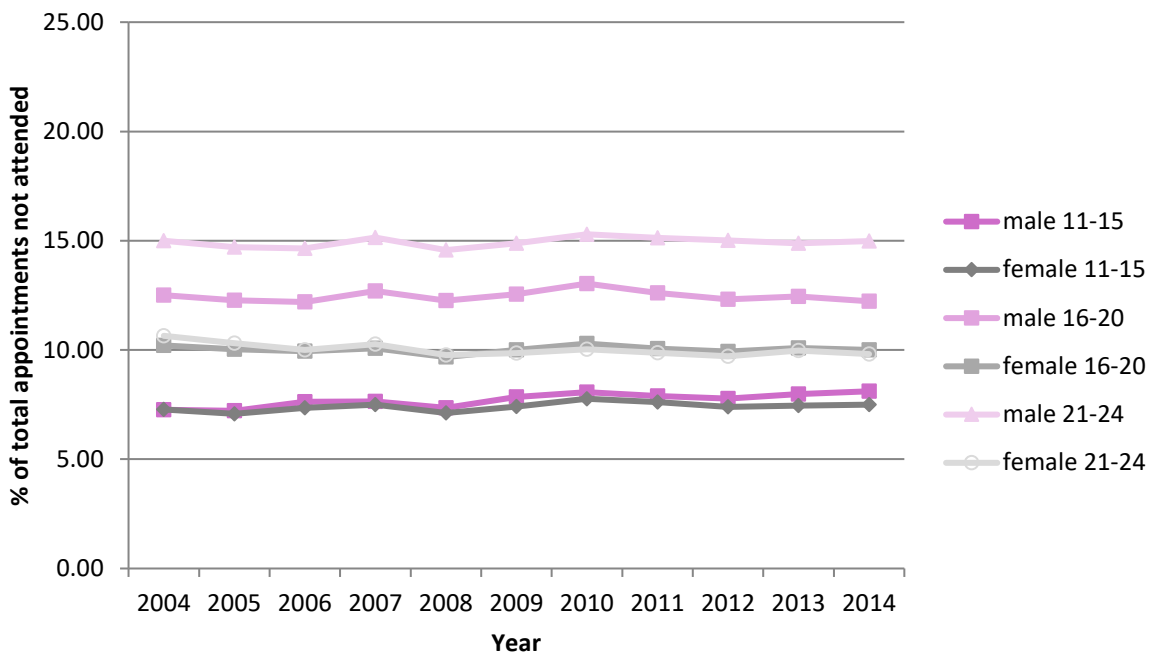
O- Figure A4.15 New to follow-up rates by IMD quintile (the number of follow-up appointment ATTENDED for each new appointment ATTENDED) for ALL specialties

Source HES- outpatients- NHS Digital England



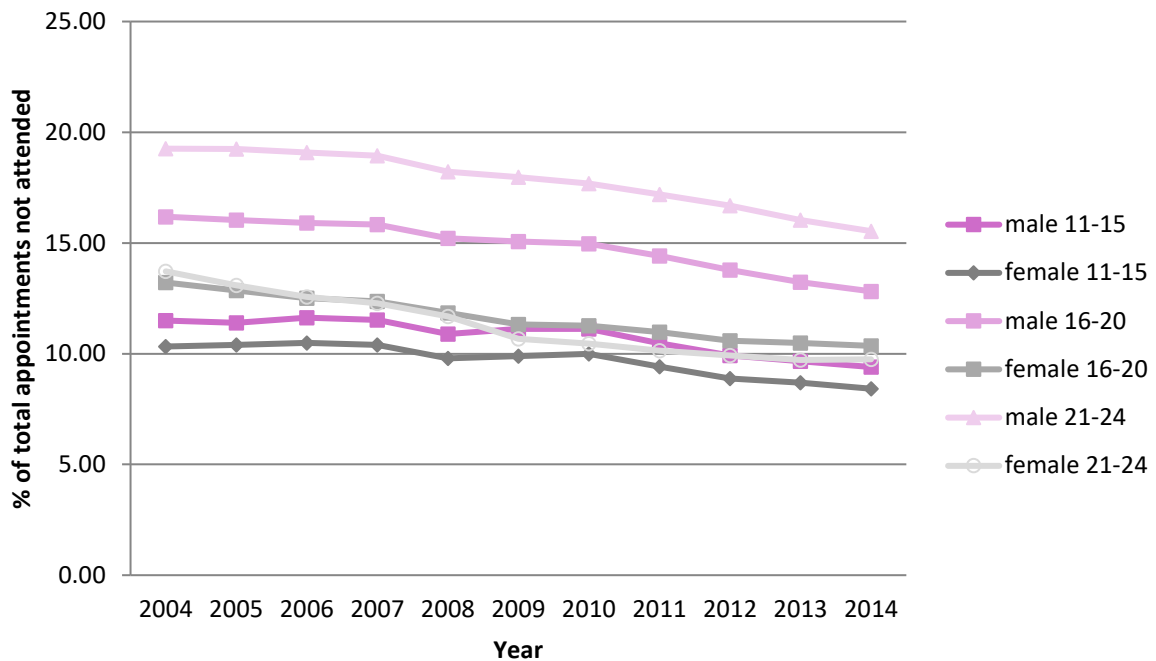
P- Figure A4.16 The 'did not attend' rate for new outpatient appointments with ALL specialties between 2004 and 2014 by age and gender

Source: HES- outpatients- NHS Digital England



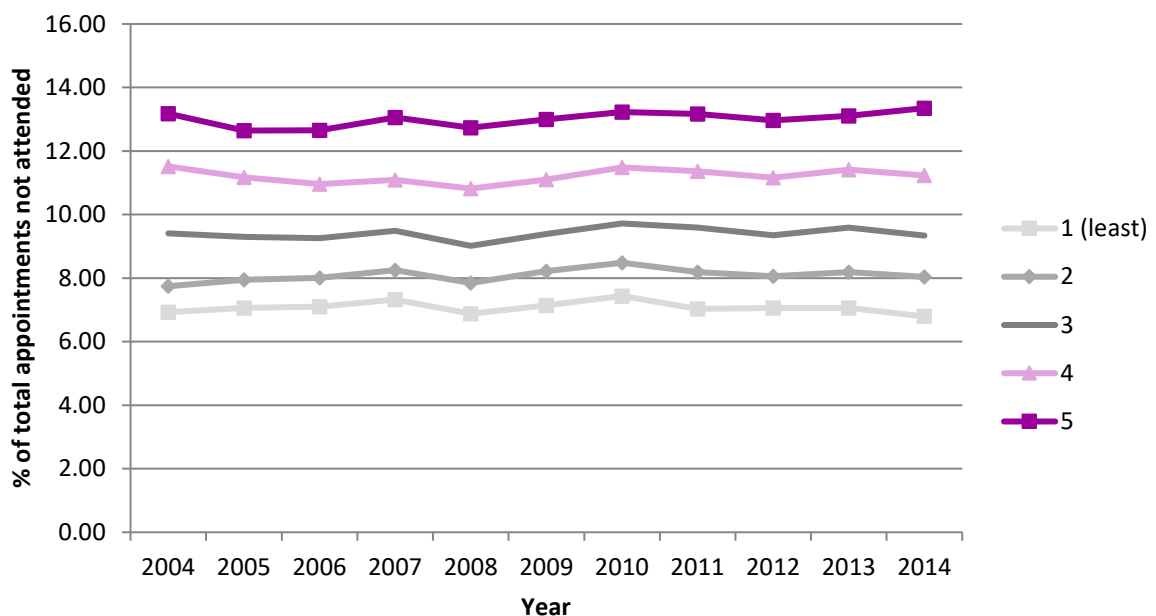
Q- Figure A4.17 The 'did not attend' rate for follow-up outpatient appointments with a ALL specialities between 2004 and 2014 by age and gender

Source: HES- outpatients- NHS Digital England



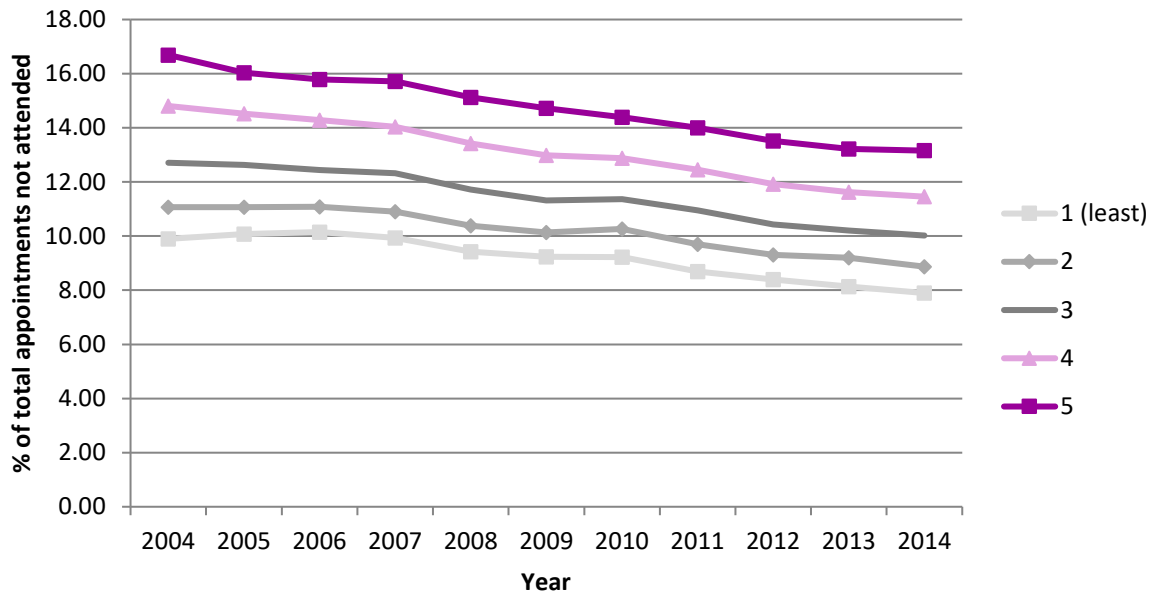
R- Figure A4.18 The 'did not attend' rate for new outpatient appointments for ALL specialities between 2004 and 2014 by deprivation (5-most deprived)

Source: HES- outpatients- NHS Digital England



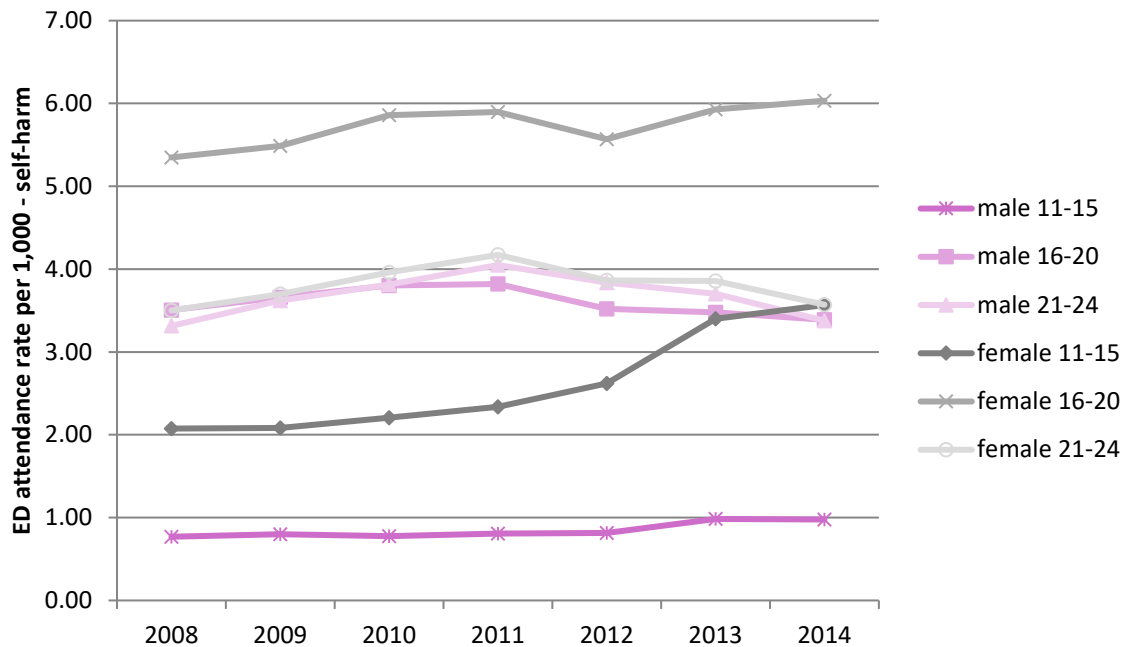
S- Figure A4.19 The 'did not attend' rate for follow-up outpatient appointments for ALL specialties between 2004 and 2014 by deprivation (5- most deprived)

Source: HES- outpatients- NHS Digital England



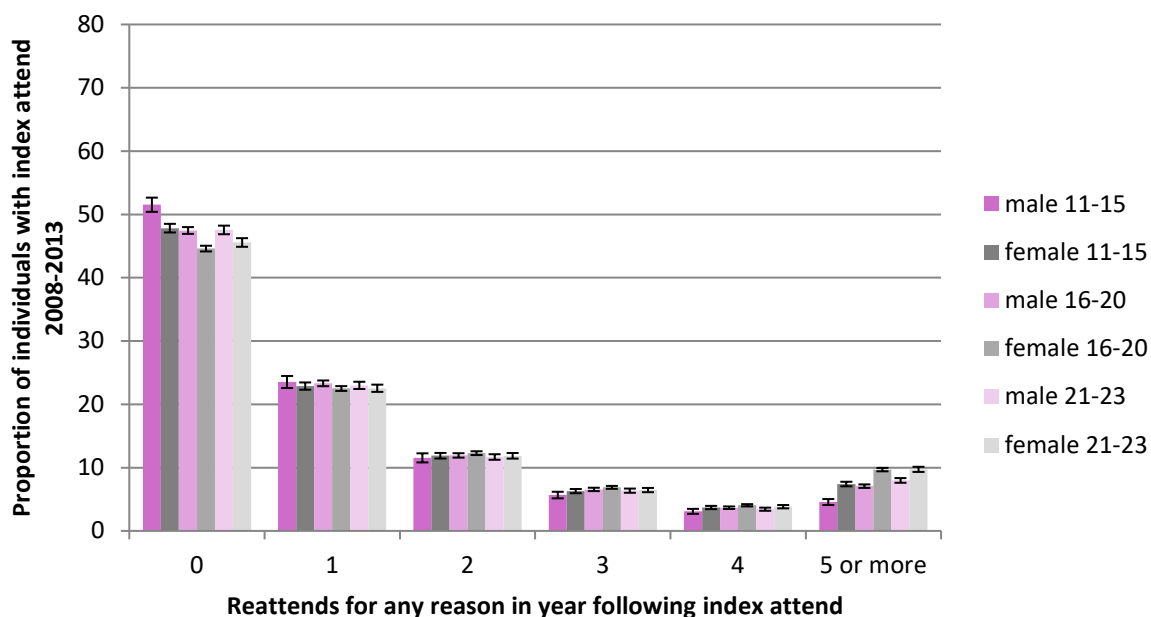
T- Figure A4.20 Rate per 1,000 ONS mid-year population estimates (counts per individual) for self-harm in the emergency department for 11-24 year olds by year, sex and project age group between 2008-2014

Source: NHS Digital England



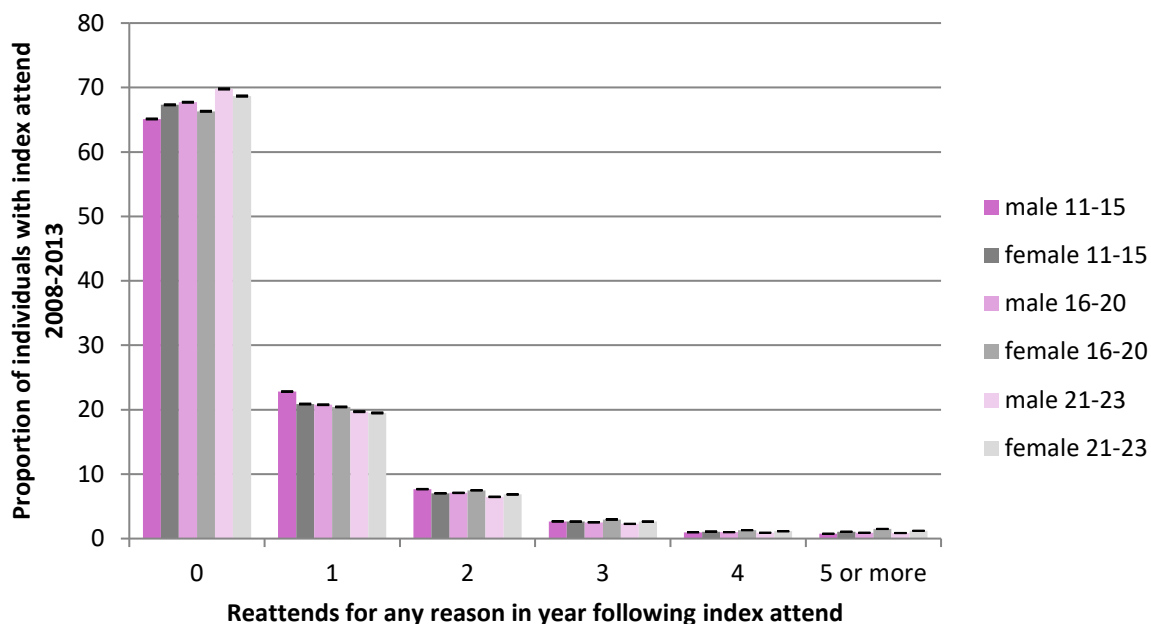
U- Figure A4.21 The proportion of re-attenders within one year following an index emergency department attendance for psychiatric conditions by sex and group between 2008 and 2013

Source: NHS Digital England



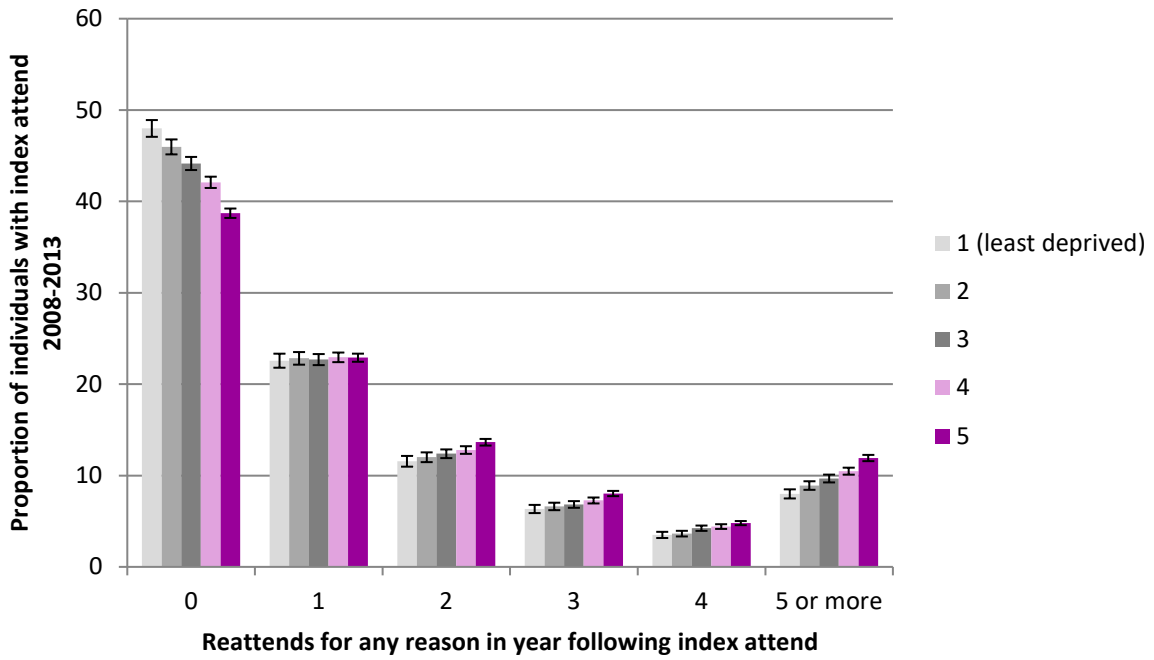
V- Figure A4.22 The proportion of re-attenders within one year following an index emergency department attendance to the emergency department (any reason) by sex and group between 2008 and 2013

Source: NHS Digital England



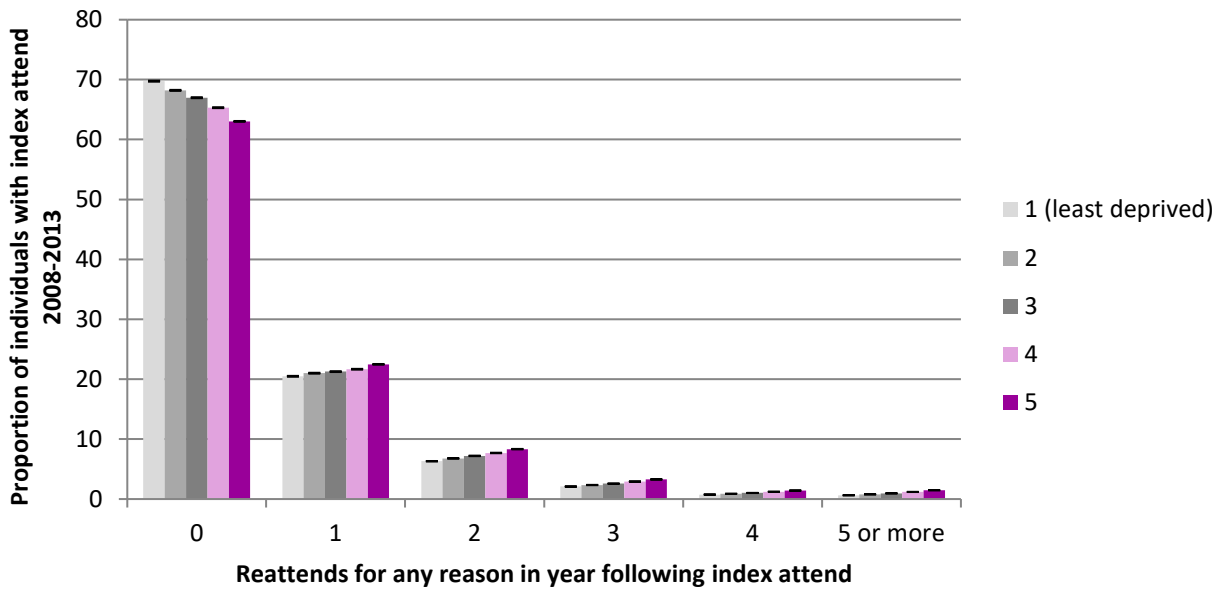
W- Figure A4.23 The proportion of re-attenders within one year following an index emergency department attendance for a psychiatric condition by deprivation between 2008 and 2013

Source: NHS Digital England



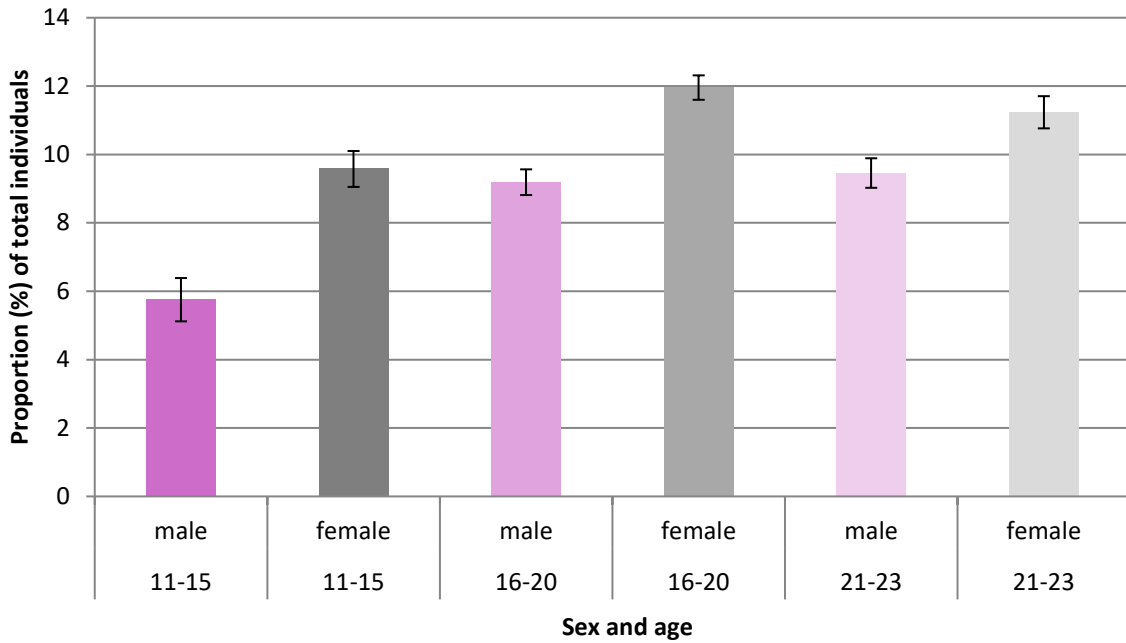
X- Figure A4.24 The proportion of re-attenders within one year following an index emergency department attendance to the emergency (any reason) department by deprivation between 2008 and 2013

Source: NHS Digital England



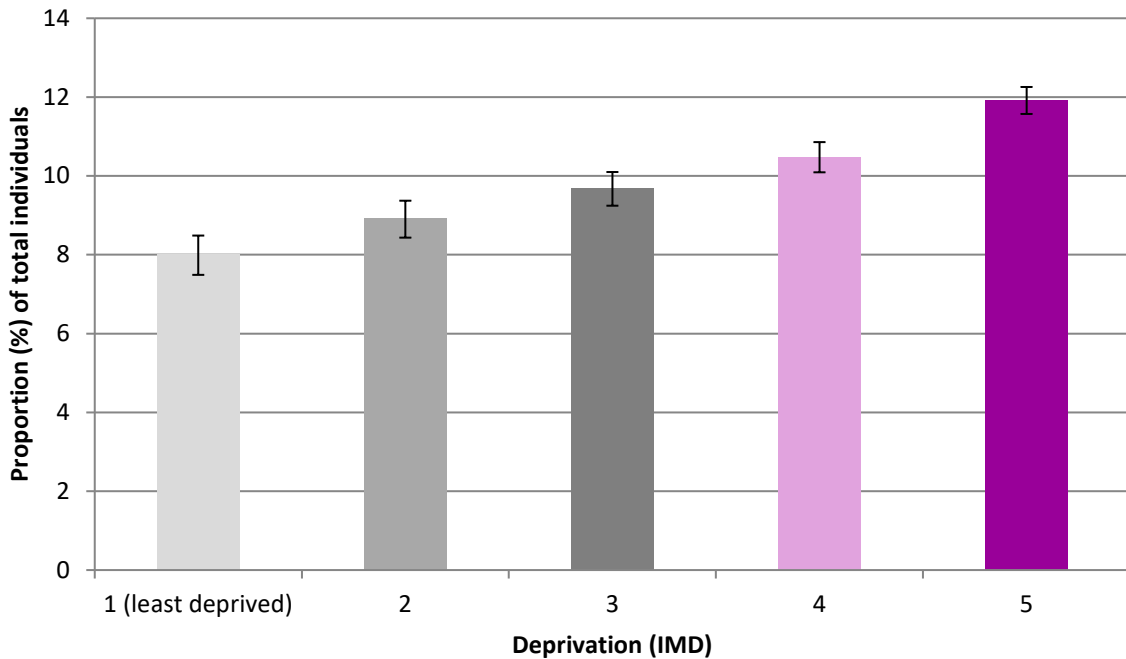
Y- Figure A4.25 The proportion of re-attenders re-attending more than five times within one year following an index emergency department attendance for psychiatric condition by sex and age group between 2008 and 2013

Source: NHS Digital England



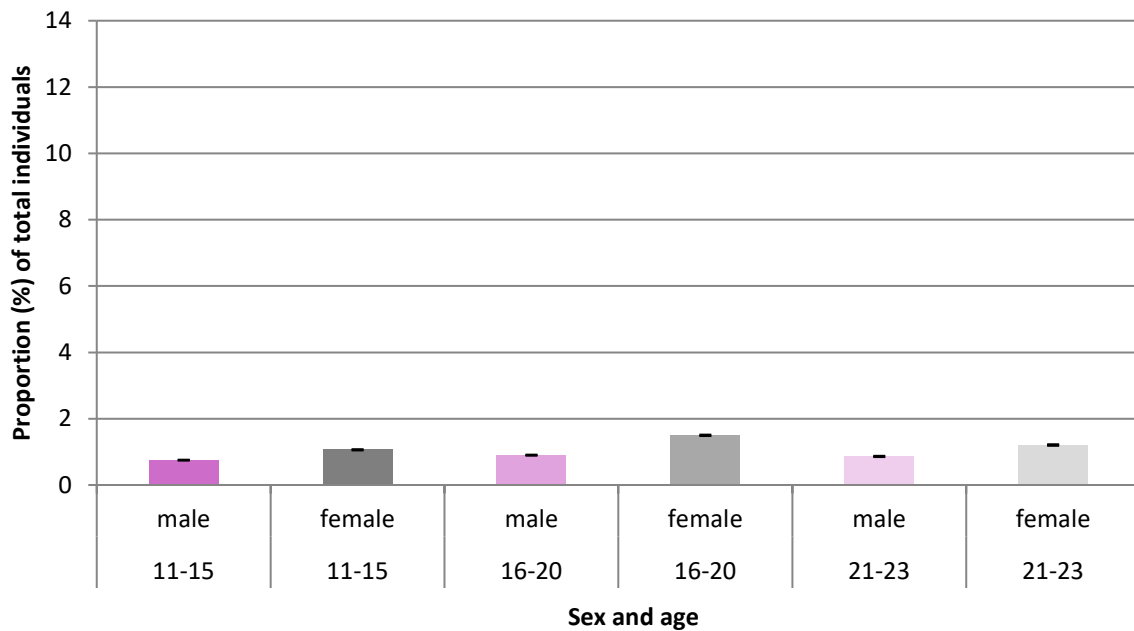
Z- Figure A4.26 The proportion of re-attenders re-attending more than five times within one year following an index emergency department attendance for psychiatric condition by deprivation between 2008 and 2013

Source: NHS Digital England



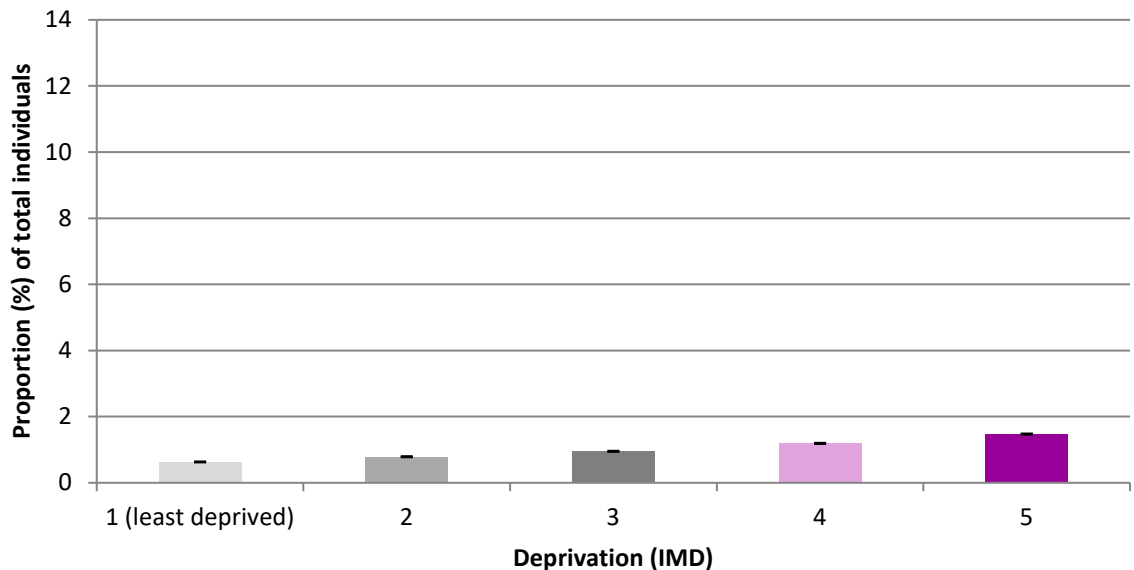
AA- Figure A4.27 The proportion of re-attenders re-attending more than five times within one year following an index emergency department attendance for any reason by sex and age group between 2008 and 2013

Source: NHS Digital England



BB- Figure A4.28 The proportion of re-attenders re-attending more than five times within one year following an index emergency department attendance for any reason by deprivation between 2008 and 2013

Source: NHS Digital England



CC- Figure A4.29 Average age at first admission to psychiatric hospitals between 2004 and 2014 for those aged between 11 and 24 years during the study period

Source: SMR04 – Scotland

	Mean age (years)	SD (years)	Median age (years)	Mode age (years)
Self-harm	19.9	2.7	20	20
Male	20.2	2.7	20	22
Female	19.7	2.7	20	21
All psychiatric admissions	20.0	3.0	20	24
Male	20.3	2.9	21	24
Female	19.7	3.1	20	24
Depression	20.1	2.9	20	24
Male	20.5	2.8	21	24
Female	19.8	3.0	20	24
Anxiety	19.8	3.4	20	24
Male	20.1	3.3	21	22
Female	19.5	3.5	20	24
Eating disorder	17.3	3.4	17	16
Male	17.0	3.9	16	21
Female	17.4	3.4	17	16