

4. Surgery

Emergency surgery >> Imaging

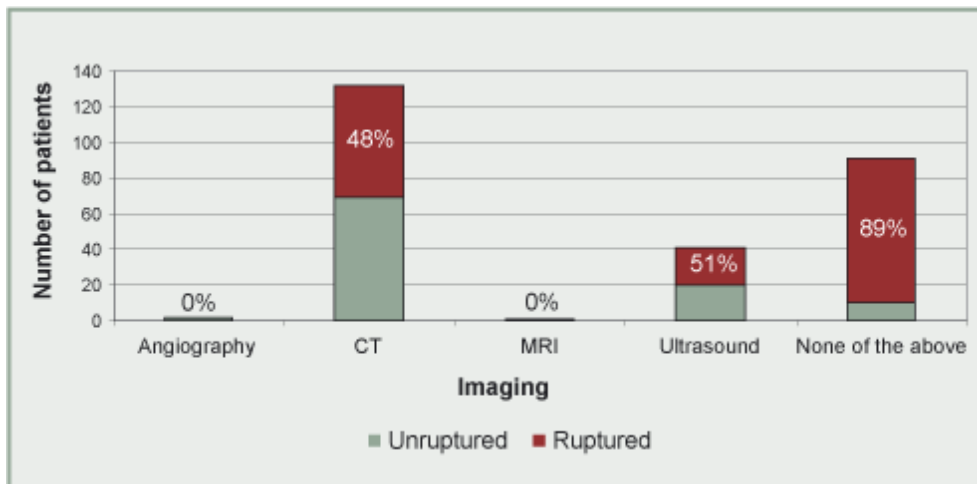


Figure 10. Imaging $n=263/264$. Answers may be multiple. Percentages refer to patients with ruptured aneurysms.

Figure 10 shows the imaging modalities used, divided into whether the aneurysm was ruptured or unruptured. Clearly, there are many patients who are stable enough for imaging even when the AAA has ruptured. Only three patients (unruptured) had any imaging additional to CT or ultrasound. As expected, the great majority of patients in whom no imaging was performed had ruptured aneurysms; presumably the diagnosis was not in doubt and the patient's condition required immediate operation without delay.