

4. Surgery

Emergency surgery >> Demographics

19% (50/264) of emergency admissions were female compared to 13% (57/434) of patients for elective AAA repair. The median ages were 75 years for men and 78 for women, which is older than for patients undergoing elective repair.

The surgeon was asked to classify the status of the aneurysm. From the answers received, 168 were ruptured aneurysms and 81 were classified as unruptured, either symptomatic or asymptomatic.

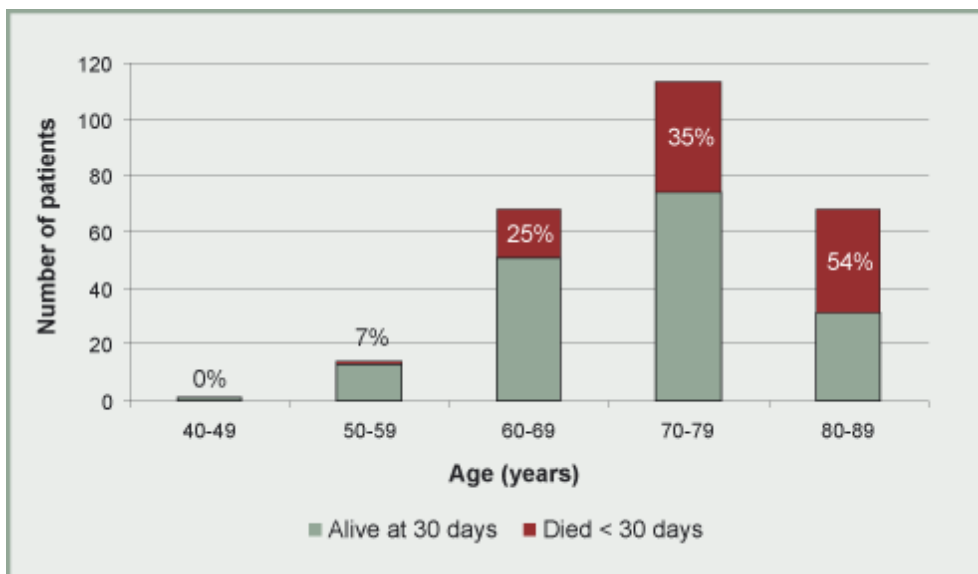


Figure 9. Age by mortality $n=264$. Percentages refer to patients who died in hospital within 30 days.